

Standard QD Bushings



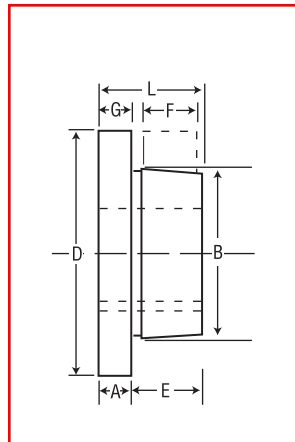
Bushing	Dimensions (Inches)								Cap Screws Required	Stock Bore Range			Set Screw Size	Average Weight (Approx.)
	A	B	D	E	F	G	L	Bolt Circle		Minimum	Maximum			
											Standard Keyway	Shallow Keyway		
JA	3/8	1.375	2	1/16	3/16	1/8	1 1/16	1.665	3-10 x 1	3/8	1	1 1/4	10-24	.9
SH	7/16	1.871	2 1/16	7/8	13/16	1/2	1 5/8	2 1/4	3-1/4 x 1 1/2	1/2	1 1/8	1 1/2	1/4	1
SDS	1/2	2.187	3 3/16	3/4	3/4	1/2	1 1/2	2 1/16	3-1/4 x 1 1/2	1/2	1 1/16	2	1/4	1
SD	1/2	2.187	3 3/16	1 1/8	1 1/4	1/2	1 3/8	2 1/16	3-1/4 x 1 1/2	1/2	1 1/16	1 3/8	1/4	1.5
SK	5/16	2.812	3 3/8	1 1/8	1 1/4	1/2	1 5/8	3 3/16	3-5/8 x 2	1/2	2 1/8	2 1/2	5/16	2
SF	3/8	3.125	4	1 1/4	1 1/4	1/2	2 1/16	3 3/4	3-3/4 x 2	1/2	2 3/8	2 3/16	5/16	3
E	3/4	3.834	6	1 1/8	1 1/8	1/2	2 3/8	5	3-1/2 x 2 1/2	7/8	2 3/8	3 1/2	3/4	10
F	13/16	4.437	6 3/8	2 13/16	2 1/2	3/4	3 3/8	5 3/8	3-3/8 x 3 3/8	1	3 3/8	3 3/8	1/2	11.5
J	1	5.148	7 1/4	3 1/2	3 3/8	3/4	4 1/2	6 1/4	3-3/4 x 4 1/2	1 1/16	3 3/4	4 1/2	3/4	18
M	1 1/4	6.500	9	5 1/2	5 3/8	3/4	6 3/4	7 3/4	4-3/4 x 6 3/4	1 1/16	4 3/4	5 1/2	3/4	37
N	1 1/2	7.000	10 1/4	6 3/8	6 1/4	1/2	8 1/8	8 3/8	4-1/2 x 8 1/2	2 1/16	5 1/8	6	3/4	57
P	1 3/4	8.250	11 3/4	7 3/8	7 1/4	1/2	9 3/8	10	4-1 x 9 1/2	2 3/16	5 3/8	7	7/8	120
W	2	10.437	15	9 3/8	9	1/2	11 3/8	12 3/4	4-1 1/2 x 11 1/2	4	7 1/2	8 1/2	1	250
S	3 1/4	12.125	17 3/4	12 1/2	12	3/4	15 3/4	15	5-1 1/4 x 15 1/2	6	8 3/4	10	1 1/4	400

Inch Bore

Bushing	Bores	Keyway
JA	3/8 - 7/16 1/2 - 1 1 1/8 - 1 1/2 1 3/8 1 1/4	NO K.W. STD. 1/4 x 1/8 1/4 x 1/8 NO K.W.
SH	1/2 - 1 1/8 1 1/8 - 1 1/2 1 3/8 - 1 3/4 1 1/2	STD 3/8 x 1/8 3/8 x 1/8 NO K.W.
SDS	1/2 - 1 1/8 1 1/4 1 3/8 1 3/4 - 1 5/8 2	STD. 3/8 x 3/8 1/2 x 1/2 1/2 x 1/2 NO K.W.
SD	1/2 - 1 1/8 1 1/4 1 3/8 1 1/2 1 3/4 2	STD. 3/8 x 3/8 1/2 x 1/2 1/2 x 1/2 1/2 x 1/2 NO K.W.
SK	1/2 - 2 1/4 2 3/8 - 2 1/2 2 1/2 - 2 3/4 2 3/8 - 2 3/4	STD. 1/2 x 1/2 3/8 x 1/2 NO K.W.
SF	1/2 - 2 1/4 2 3/8 - 2 1/2 2 1/2 - 2 3/4 2 3/8 - 2 3/4 2 3/8	STD. 3/8 x 3/8 3/8 x 1/2 3/8 x 1/2 3/8 x 1/2
E	3/4 - 2 1/4 2 3/8 - 3 1/4 3 3/8 - 3 1/2 3 3/8	STD. 3/4 x 3/4 3/8 x 1/2 3/8 x 1/2
F	1 - 3 3/8 3 3/8 - 3 3/4 3 3/8 - 3 13/16 4	STD. 3/8 x 3/8 1 x 1/4 NONE
J	1 1/4 - 3 3/4 3 13/16 - 4 1/2	STD. 1 x 1/4
M	2 - 4 3/4 4 13/16 - 5 1/2	STD. 1 1/4 x 1/4
N	2 3/8 - 5 5 1/8 - 5 1/2 5 3/8 - 6	STD. 1 1/4 x 1/4 1 1/2 x 1/4
P	2 3/8 - 5 13/16 6 - 6 1/2 6 3/8 - 7	STD. 1 1/2 x 1/4 1 3/4 x 1/4
W	4 - 7 1/2 7 3/8 - 8 1/2	STD. 2 x 1/4

Millimeter Bore

Bushing	Bore MM	Key* WXT
SH	24, 25 28, 30 32, 35	8x7 10x8
SDS	24, 25 28, 30 32, 35 38 40, 42	8x7 10x8 12x8
SD	24, 25 28, 30 32, 35 38 40, 42	8x7 10x8 12x8
SK	24, 25 28, 30 32, 35 38 40, 42 48, 50 55	8x7 10x8 12x8 14x9 16x10
SF	28, 30 32, 35 38 40, 42 48, 50 55 60	8x7 10x8 12x8 14x9 16x10 18x11
E	35, 38 40, 42 48, 50 55 60, 65 70, 75	10x8 12x8 14x9 16x10 18x11 20x12
F	48, 50 55 60, 65 70, 75 80, 85 90	14x9 16x10 18x11 20x12 22x14 25x14
J	50 55 60, 65 70, 75 80, 85 90, 95 100	14x9 16x10 18x11 20x12 22x14 25x14 28x16



★Important — The metric system does not refer to keyseat or keyway dimensions as does the English system; instead dimensions are given for the key itself which is rectangular in shape, not square as in the English system.

NOTE: .03937" = 1mm
Ex — 24 mm = 0.94488"

TO ORDER:
SH 24 mm

Keystock provided for nonstandard keyways.